

LESS POLLUTION
LESS LIMITATIONS
MORE SIMPLICITY IN THE AIR

EasyVEC®

The box fan range that makes ventilation easier.

RESIDENTIAL AND COMMERCIAL AIR EXHAUST SYSTEMS



#HealthyLiving*

Whether in our homes, in a hotel, at the office, at the gym, in a shop, at the doctors or at school, we spend almost 90% of our time in enclosed areas. Studies show that indoor air is 2 to 7 times more polluted than outdoor air.

Because we should all be able to enjoy better air quality easily, **Aldes** has developed **EasyVEC®**, a range of air exhaust units for multi-family housing and commercial buildings.

A UNIQUE, COMPLETE RANGE FOR MORE EFFICIENCY AND SIMPLICITY

The units of the **EasyVEC®** range are easy to install, configure and maintain. With great ease, they deliver constantly-renewed air.

* Un art de vivre sain.



EasyVEC® range THE RANGE OF UNIDIRECTIONAL UNITS TO MAKE VENTILATION EASIER.

The **EasyVEC®** range offers a wide range of airflow settings from standard to very low power consumption and is thus easily incorporated into any residential or commercial unidirectional ventilation system.

To help optimise the environmental impact of buildings, EasyVEC® C4 Micro-watt+ is fitted with unique self-learning - **Auto-Adaptative Technology™**.

This patented technology automatically generates a customised regulation profile to achieve unrivalled thermal performances.

Easy to select

A full, unique range with expert trade software (Selector PoWair®, Conceptor Ventilation) for easy system design and equipment selection.

Easy to install

All units above 4000 m³/h can be fully dismantled.
Plug & Play: all-in-one system.

Easy to configure

More intuitive, simple and precise configuration with the **EasyVEC®** remote control

Easy to maintain

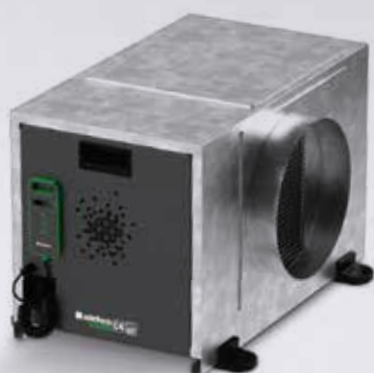
Fewer reasons to make errors.
Access is clearly marked for intuitive, simplified installation and maintenance.

Easy to integrate

With components from Aldes solutions: air inlets, terminals, grilles, diffusers, ducts and ductwork accessories, etc.

Up to
30%

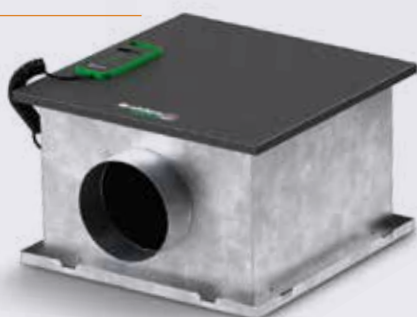
**Better thermal performance
by EasyVEC® micro-watt + compared
with a standard unit.**



EasyVEC® C4 from 300 to 3,000 m³/h



EasyVEC® C4 from 4,000 to 12,000 m³/h

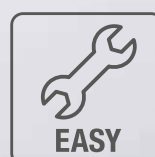


EasyVEC® Compact from 300 to 2,000 m³/h



EasyVEC® from 4,000 to 12,000 m³/h

Images not contractually binding



EasyVEC® range ATTRACTIVE AND SMART DESIGN

Here, each detail has been thought out to make installation and maintenance much easier.



Image not contractually binding.

TWICE AS FAST TO CONFIGURE ⁽²⁾:

- Remote control available on the micro-watt and micro-watt+ ranges
- Configuration tutorials on easyvec.aldes.com for getting started easily

EASY CHOICE BETWEEN: 4 AVAILABLE MODELS:

- Controlled pressure⁽³⁾
- Constant pressure
- Constant airflow⁽³⁾
- 0-10 V control

Scan this code for more information and go directly to the EasyVEC® website



⁽¹⁾ Optional.

⁽²⁾ Compared with products equipped with frequency regulator. Remote control as standard on micro-watt and micro-watt+ versions.

⁽³⁾ Only on micro-watt+ version.

AN ALDES CONNECT™ PRO CONNECTED SYSTEM

UNDETECTED VENTILATION BREAKDOWNS OR FAILURES ARE OVER!



DETECT
breakdowns and failures.

Immediate warning if there is a problem
with the unit.



FACILITATE
rapid intervention
by maintenance firms.

Immediate, automatic
notification by e-mail.



**Henceforth, monitor the smooth operation
of all your installed equipment directly
from your Internet browser!**

AN OPTIMISED SYSTEM THROUGH ALDES SOFTWARE

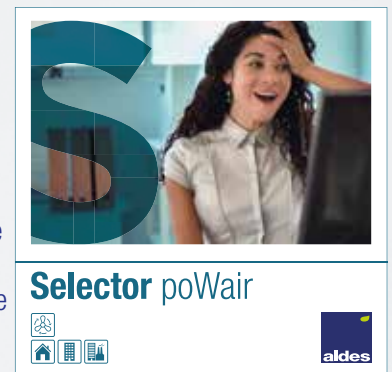
Already over 4,200 Selector Powair downloads!
This is the most frequently used software by design offices.

SELECTOR POWAIR assistant software for unidirectional fan selection

With a 70% spontaneous recognition rate by French design engineers, **Selector PoWair** is THE software to ensure quick selection of your fan units upstream of your project:

- Ergonomic: it needs the minimum amount of information (type of building, air exhaust and/or supply, indoor or outdoor fan units, ducts, roof fans, etc.) to propose a selection of fan units to suit your project needs.
- Precise: it calculates the electricity consumption and delivers a selection compatible with RT 2012 thermal regulations and national regulations.

Available in multiple languages on PC, tablet and smartphone



With a simple interface
and a quality final report
it truly is an essential tool
for trade professionals.

CONCEPTOR VENTILATION ventilation system design software

Simple to use, ultra precise and full-featured, **Conceptor Ventilation** helps identify the most economical fan unit for your project, but which delivers the best ventilation!

- 3 distinct modules: individual housing, multi-family-housing, commercial (offices, schools etc.)
- Simple and intuitive to use
- Full technical documentation provided at end of design project with a list of ventilation products and accessories needed to execute the project.



It is reliable and extremely precise,
its efficiency is acknowledged by
many trade professionals (design
offices, installers)

THE EasyVEC® effect INSTALLERS SPEAK WELL OF IT

Is EasyVEC® really easier to install and maintain?

An Aldes approved installer who tested the new range shares his opinions with us.

“**WITH THIS NEW EasyVEC® RANGE,
ALDES IS MAKING THING EVEN EASIER FOR US...**

Luis LOPES, director of MEYER VENTILATION in Argonay (74)

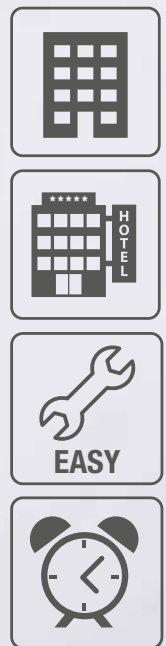
What type of installation projects do you work on?

We mainly work on new residential projects, especially on multi-family buildings or retirement homes. On average we install 5-6 fan units every month and manage around 200 maintenance contracts for all our customers.

In your opinion, what benefits does the EasyVEC® range offer?

EasyVEC® has all the qualities of previous ranges which have helped built a strong reputation for Aldes, **with the added extra of energy savings** using electric motors that consume very low levels of power. On average, our teams take **50% less time to install** the unit. The belt-free unit makes **maintenance much easier too**.

And when we submit bids for tenders, we use the **selector software, which is really easy to use** and shows us which system is the best to meet all the technical and budget conditions.





EasyVEC® RANGE

			AIRFLOW IN M³/H	
<div>EasyVEC® C4</div> 	Standard			
	micro-watt	300	<div></div>	12 000
	micro-watt +			
<div>EasyVEC® Compact</div> 	Standard			
	micro-watt	300	<div></div>	2 000
	micro-watt +			
<div>EasyVEC®</div> 	Standard			
	micro-watt		3 000	<div></div> 12 000
	micro-watt +			

Main options available:

- 25 mm dual-skin insulation (except standard C4 < 4000 m³/h)
- G4, F5, F7 and F9 filters (not C4)

- Connection to BMS via Modbus RTU or Bacnet IP (micro-watt and micro-watt+)



IDEAL APPLICATION					IDEAL MARKET		FUNCTION	
Multi-family housing	High-rise apartment building	Hotels Student residence Retirement home	Sanitary Commercial	Health Education Offices Retail	RENOVATION	NEW	AIR EXTRACTION	AIR SUPPLY
●	●	●	●		●		●	
●	●	●			●	●	●	
●	●	●				●	●	
				●	●		●	●
				●	●	●	●	●
				●		●	●	●
				●	●		●	●
				●	●	●	●	●
				●		●	●	●



For more information on the EasyVEC® air exhaust solution,
contact your Aldes sales advisor or visit aldes.com
or find us on    